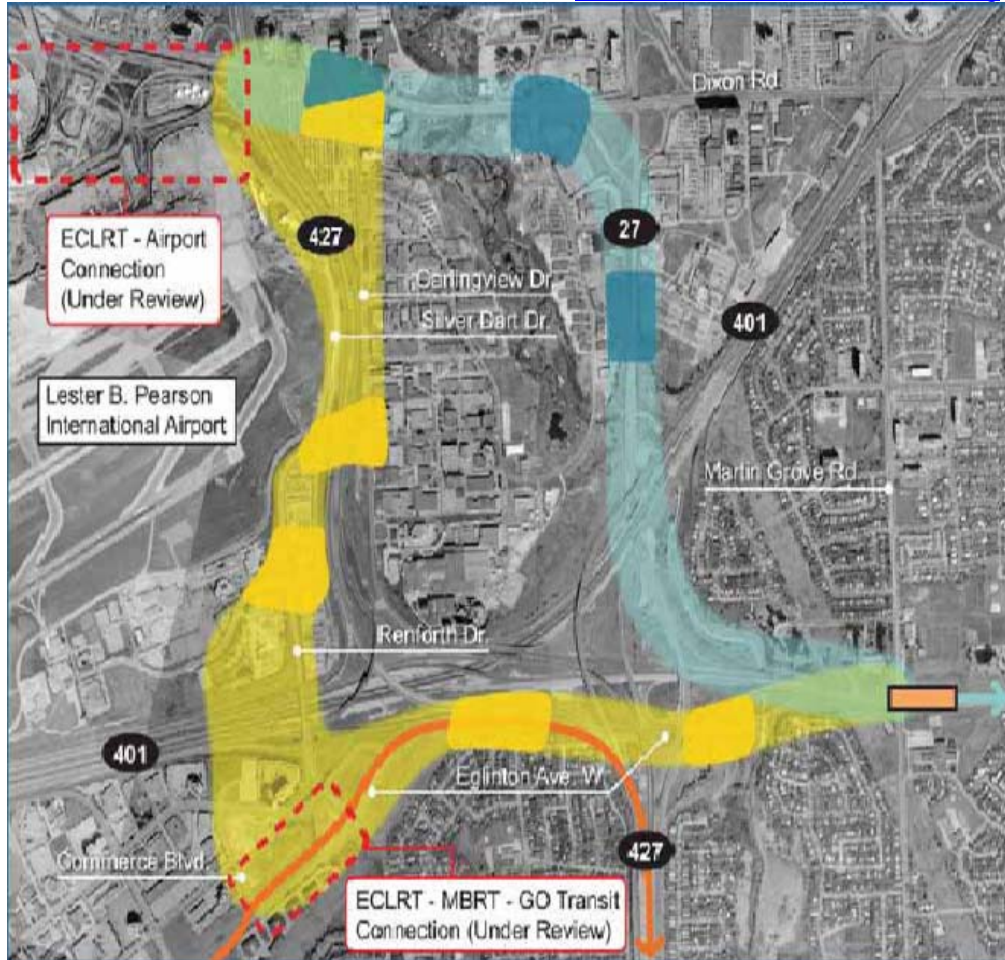


# Proposed Martin Grove to Pearson International Airport LRT

Reference: [Eglinton Crosstown Light Rail Transit \(LRT\) Preliminary Planning for a Transit Project Assessment Study, PDF1, PDF2, PDF3](#)  
 Contact: E: [eglingtontransit@toronto.ca](mailto:eglingtontransit@toronto.ca) T: 416-392-6900 (24/7 Comment) TTY: 416-397-0831 Web: [www.toronto.ca/transitcity](http://www.toronto.ca/transitcity)  
 Alternate Contact: Councillor Holyday's Office: E: [councillor\\_holyday@toronto.ca](mailto:councillor_holyday@toronto.ca) T: 416-392-4002  
 Alternate Contact: Markland Homes Association: [MHAPresident@MarklandWood.org](mailto:MHAPresident@MarklandWood.org)



A special study is currently underway to evaluate two alternative surface Eglinton Crosstown LRT corridors from Martin Grove Road to Terminal 1 of Pearson International Airport. The recommended Eglinton Crosstown LRT route and stop locations was presented at Open Houses this year.

- The map to the left and the legend shows the two proposed Airport routes.
- The map at the bottom of the page shows the full proposed Eglinton TTC surface & underground LRT system.

